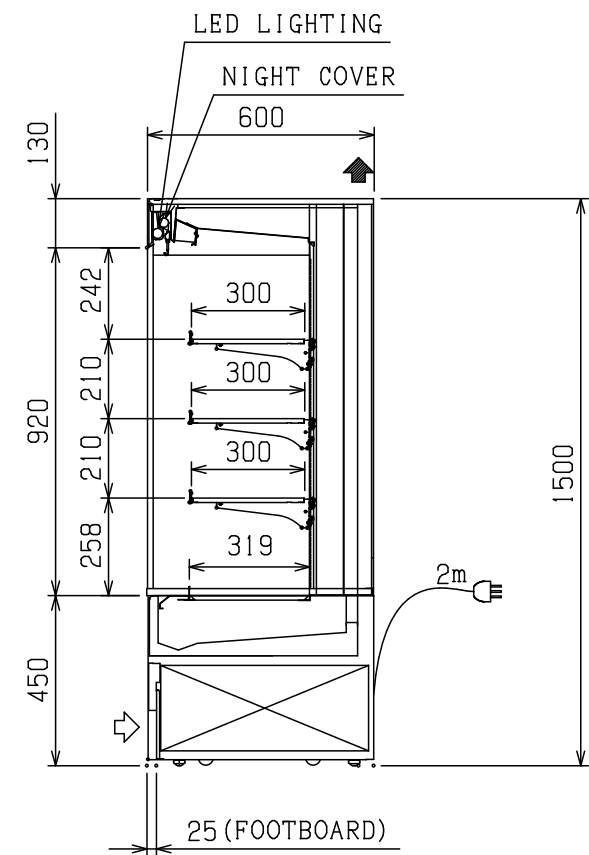
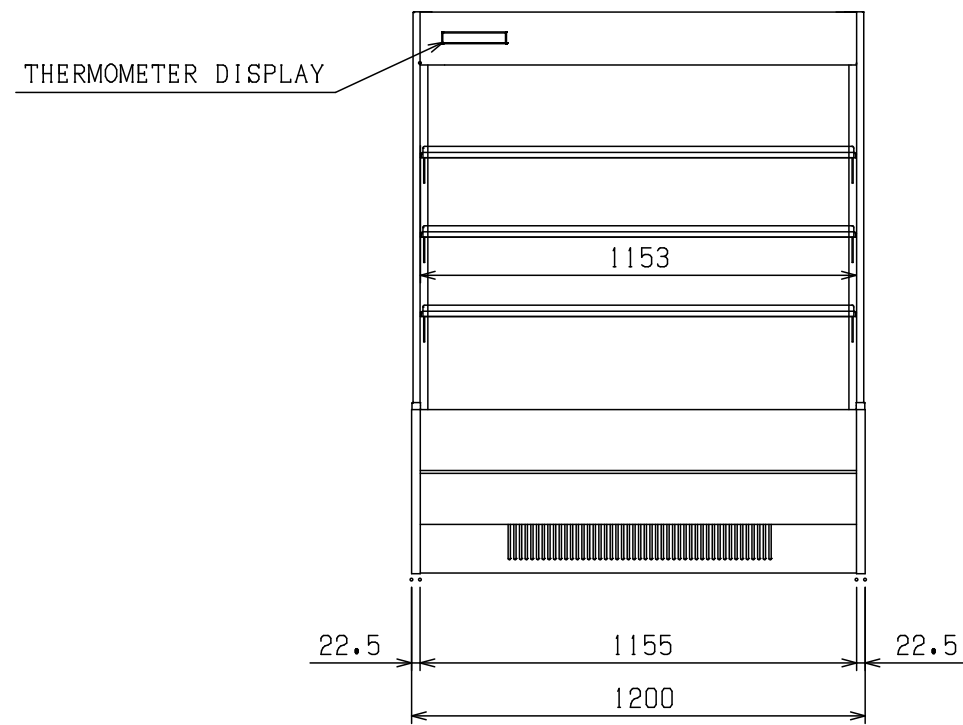
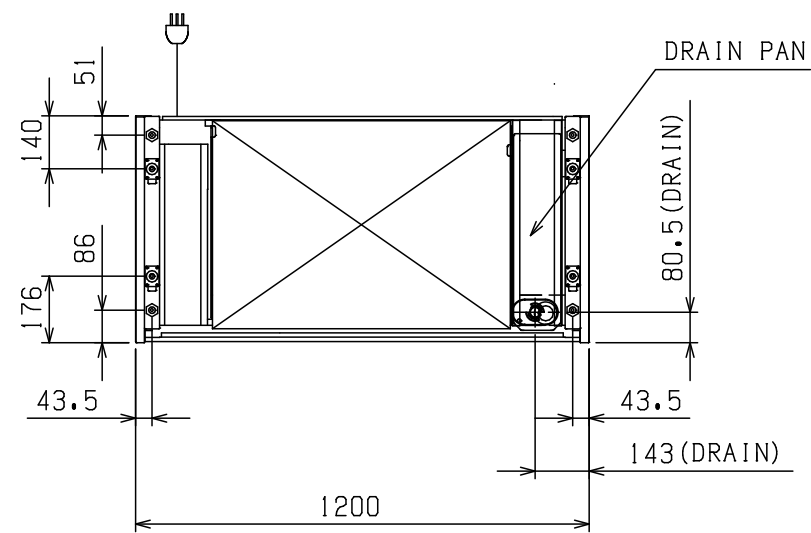


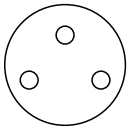
MAXIMUM WEIGHT	
PER SHELF	40 (kg)



PRODUCT NAME	Commercial Refrigerator Showcase	
MODEL	MEU-4AGHJA3L-TH	
POWER SUPPLY	Single Phase 220V 50Hz	
OUTSIDE DIMENSIONS	(W) 1200mmX (D) 600mmX (H) 1500mm	
INSIDE DIMENSIONS	(W) 1155mmX (D) 319mmX (H) 920mm	
EFFECTIVE CAPACITY	353L	
SHELF	Steel Plate Shelf(Variable 0 ° or 8°)	
DISPLAY AREA	1.40 m <sup>2</sup>	
WEIGHT	200kg	
EXTERIOR MATERIAL	Color Steel, Painted Steel Galvanized Steel, Pair Glass Resin Molded Product	
INTERIOR MATERIAL	Color Steel, Painted Steel	
INSULATION MATERIAL	Polyurethane Foam	
AMBIENT AIR CONDITION	Temperature	27°C OR LESS
	Humidity	70% OR LESS
	Wind Speed	0.2m/s OR LESS
COOLING PERFORMANCE	3°C to 20°C (No Load and Within Ambient Air Condition)	
COMPRESSOR	1250W (DC Inverter)	
REFRIGERANT CONTROL METHOD	Electronic Expansion Valve	
CONDENSER	Fin and Tube Type, Forced Air-Cooling	
EVAPORATOR	Fin and Tube Type, Forced Cold Air Circulation	
REFRIGERANT	R-404A	
TEMPERATURE CONTROL	Microcomputer Control, Digital Display	
DEFROST CONTROL	Microcomputer Control Offcycle Defrost	
APPLICABLE BREAKER CAPACITY	Single Phase 220V 15A 50Hz	
POWER CORD	2.0m (Plug with Earth Wire)	
VOLTAGE RANGE	220V±6%	
COOLING	Operation Current	6.1A
	Maximum Current	9.5A
	Power Consumption	1310W
	Power Factor	97%
DEFROSTING	Operation Current	2.2A
	Power Consumption	436W
RADIATION OF HEAT CAPACITY	4840W	
ACCESSORIES	Alarm Buzzer (Standard Equipment)	
	Night Cover	
	Caster	
	Drain Pan	
OTHER ACCESSORIES	Drain Evaporator	
	Condenser Filter	
	Internal Lighting (LED: 11.2Wx1)	

- ⇨ SUCTION AIR
- ⇨ EXHAUST AIR

PLUG TYPE



- 1.Ambient temperature: 27°C, humidity: 70%, wind speed: 0.2 m/s or less  
If the above installation conditions are exceeded, wastewater treatment is required  
Approximate temperature: 25°C, 80% (during rainy season),  
Discard the water in the drain pan once a day.
- 2.The evaporator cloth of the evaporator is a consumable item.  
As a rule of thumb, it needs to be replaced in about 2 years.  
Depending on the environment, the performance of the evaporating  
cloth may deteriorate and need to be replaced after about one year.
- 3.The back side unit will have a higher ambient temperature due to exhaust heat.  
Please be careful about the display of surrounding products
- 4.We may change it without a notice for improvement about the specifications and design.

		REFERENCE NO
DATA 05 . 04 . 2021	SCALE 1/20	DRAWING NO
GALILEI (THAILAND) CO., LTD.		